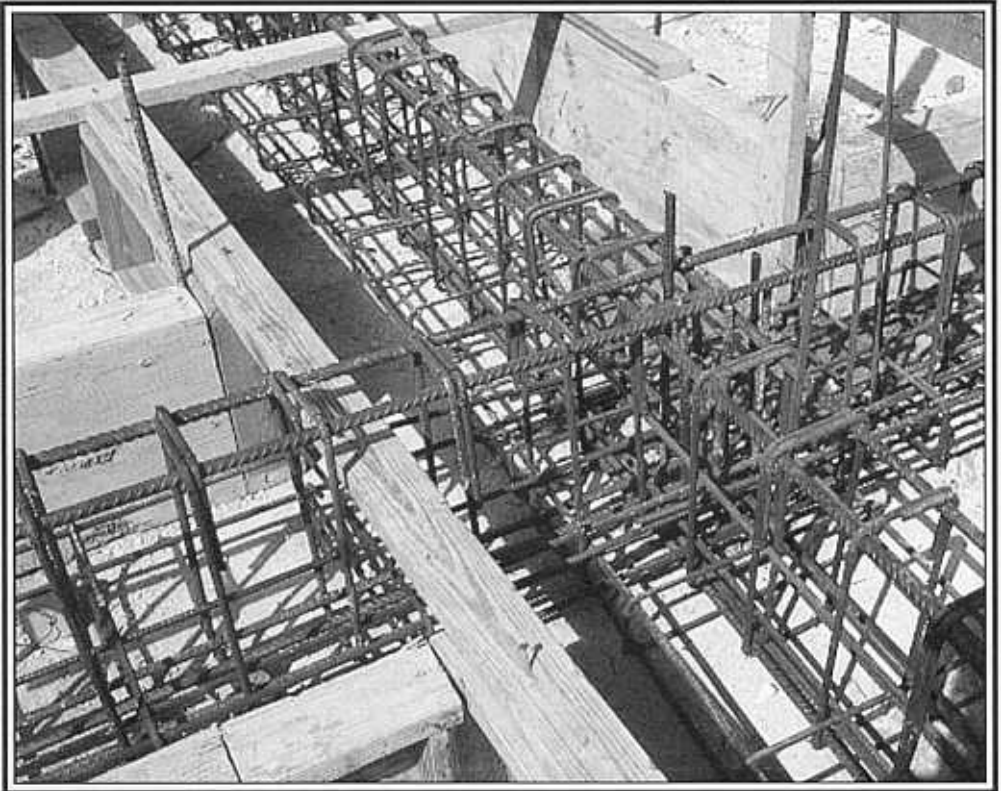


# Rebars



BRC West Indies Limited, Cane Garden, St. Thomas, Barbados.  
Tel: (246) 425-0371 Fax: (246) 425-2941 Email: [brc@caribsurf.com](mailto:brc@caribsurf.com)

# HOT ROLLED STEEL BARS FOR THE REINFORCEMENT OF CONCRETE (BS4449 : 1988)

BRC West Indies Ltd., carries in stock a wide range of Rebars in both smooth (BS4449:250) and high yield deformed (BS4449:460). See below standard stock items. BRC West Indies Ltd. can also supply on request to other standards, e.g. ASTM A615.

## STOCK ITEMS

	No. Bars/MT	
	6m	12m
*6 mm	750	375
*8 mm	421	210
10 mm	270	135
12 mm	185	92
16 mm	105	52
20 mm	67	33
25 mm	44	22
32 mm	26	13

\* Stocked in Mild Steel only for these two sizes. A cold drawn deformed bar is offered as a substitute to high yield BS4449:1988

## REINFORCING BARS

Smooth mild steel round to BS4449:1988  
High yield hot rolled deformed to BS4449:1988

DIAMETER	NOMINAL WEIGHT		AREA	METRES PER TONNE
	mm	kg/m		
6	0.222	0.149	28.27	4505
8	0.395	0.265	50.27	2532
10	0.616	0.414	78.54	1623
12	0.888	0.597	113.10	1126
16	1.579	1.061	201.06	633
20	2.466	1.657	314.16	406
25	3.854	2.590	490.87	259
32	6.313	4.242	804.25	158

## SECTIONAL AREA IN SQUARE MILLIMETRES PER METRE WIDTH

### Bar size in mm

Spacing in mm	6	8	10	12	16	20	25	32	40
75	377.0	670.2	1047.2	1508.0	2680.8	4188.8	6545.0	10723.3	16755.2
100	282.7	502.7	785.4	1131.0	2010.6	3141.6	4908.7	8042.5	12566.4
125	226.2	402.1	628.3	904.8	1608.5	2513.3	3927.0	6434.0	10053.1
150	188.5	335.1	523.6	754.0	1340.4	2094.4	3272.5	5361.7	8377.6
175	161.6	287.2	448.8	646.3	1148.9	1795.2	2805.0	4595.7	7180.8
200	141.4	251.3	392.7	565.5	1005.3	1570.8	2454.4	4021.2	6283.2
225	125.7	223.4	349.1	502.7	893.6	1396.3	2181.7	3574.4	5585.1
250	113.1	201.1	314.2	452.4	804.2	1256.6	1963.5	3217.0	5026.5
300	94.2	167.6	261.8	377.0	670.2	1047.2	1636.2	2680.8	4188.8
350	80.8	143.6	224.4	323.1	574.5	897.6	1402.5	2297.9	3590.4
400	70.7	125.7	196.3	282.7	502.7	785.4	1227.2	2010.6	3141.6
450	62.8	111.7	174.5	251.3	446.8	698.1	1090.8	1787.2	2792.5
500	56.5	100.5	157.1	226.2	402.1	628.3	981.7	1608.5	2513.3